

Installation Instructions:

Ensure within aperture is clean and free of debris, loose cement, and remove all dust from surfaces requiring installation.

Detail A- Framed & lined, single iFB750 Intubatt up to 60 minutes integrity & 45 minutes insulation.

1. Cut required length of FP302 Intustrap to wrap around the outside of the three insulated pipes to form two layers.
2. Fit FP302 Intustrap around the insulation in line with the proposed FB750 Intubatt position.
3. Cut FB750 Intubatt to tightly fit in to aperture and around FP302 Intustrap.
4. Coat FB750 Intubatt edges and fit in to opening at required position.

Detail B- Framed opening, two layers of FB750 Intubatt suitable for up to 90 minutes integrity & insulation

1. Cut required length of FP302 Intustrap to wrap around the outside of the three insulated pipes to form two layers.
2. Fit FP302 Intustrap around the insulation inline with the proposed FB750 Intubatt position
3. Cut FB750 Intubatt to tightly fit into aperture and around insulated pipes, forming a rebate for the FP302 intustrap within the FB750 Intubatt
4. Coat FB750 Intubatt edges and fit in opening at required position.
5. Fit FB750 Intubatt into opening ensuring good bonding to framing and plasterboard edge.
6. Repeat the above to the opposite side of the wall.

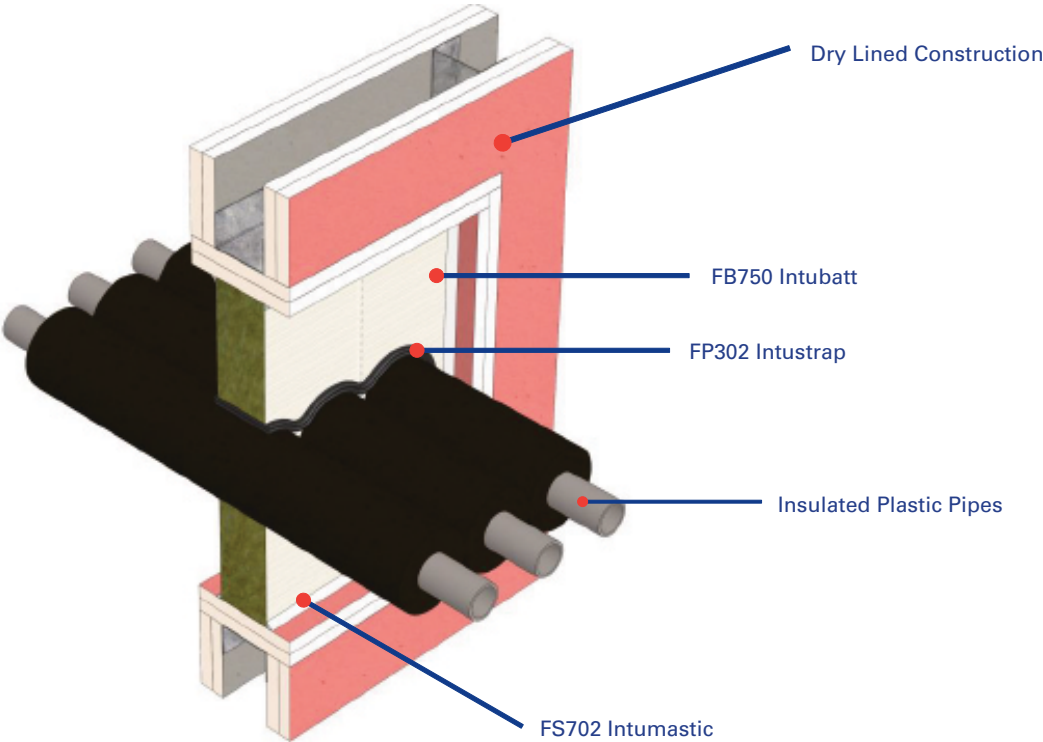
Detail C- Unframed, unlined, double patress Intubatt rated up to 90 minutes integrity & insulation.

1. Cut required length of FP302 Intustrap to wrap around the outside of the three insulated pipes to form two layers.
2. Fit FP302 Intustrap around the insulation inline with the proposed FB750 Intubatt position.
3. Cut FB750 Intubatt to required size and shape, ensuring that FB750 Intubatt will overlap the plasterboard a minimum of 75mm around the opening.
4. Apply FS702 Intumastic to plasterboard where FB750 Intubatt is to be fitted, to bond FB750 Intubatt to plasterboard and FB750 Intubatt to FB750 Intubatt.
5. Firmly press FB750 Intubatt to plasterboard to ensure bond.
6. Fix the FB750 Intubatt to the plasterboard using minimum 75mm long steel screws and 25mm diameter steel washers. Fixings should not exceed 65mm from any edge and not exceed 260mm centres.

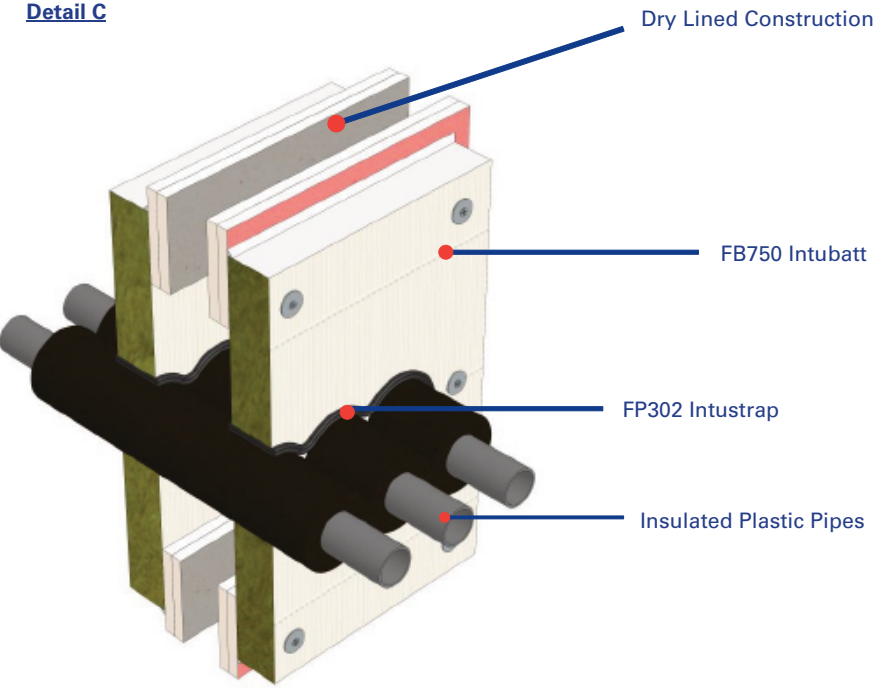
General

1. Apply FS702 Intumastic bead to all FB750 Intubatt interfaces / joints
2. Coat all joints, exposed edges of FB750 Intubatt and damages to coating with FS702 Intumastic brush grade.

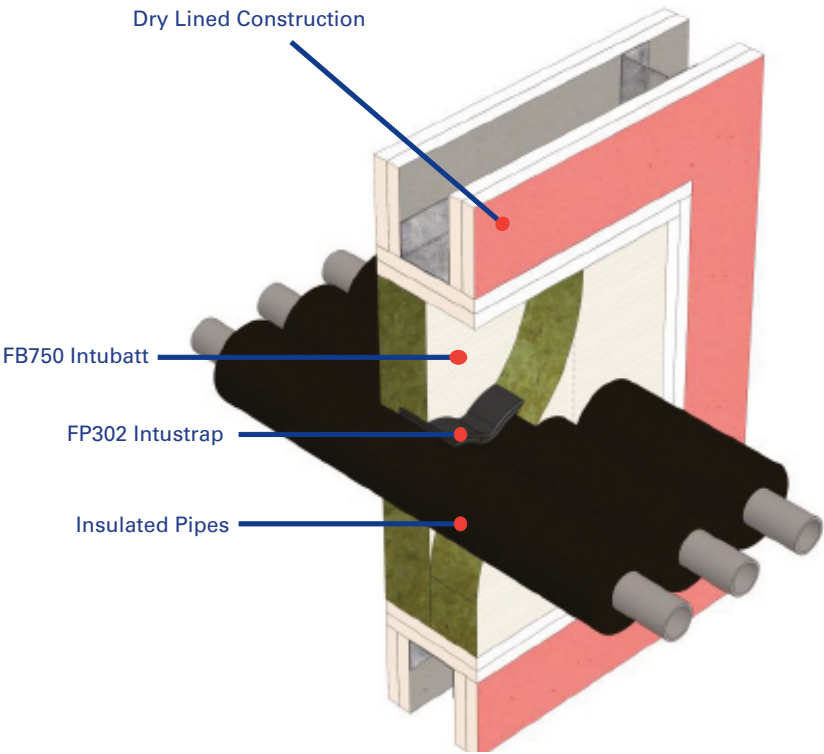
Detail A



Detail C



Detail B



Test Information:

Test: BS EN 1363-1, BS EN 1366-3&4  
Test Reference: WF 370054

Products:

FB750 Intubatt, FP302 Intustrap & FS702 Intumastic

Scenario:

Banks of insulated combustible pipes through 90 minute dry lined wall construction. 100mm overall thickness.

Penetrations:

Up to 40mm combustible pipes, 20mm nitrile insulation.

Void Size:

90mm x 550mm  
Above framework required

Fire Resistance:

Detail A- E 60, I 45  
Detail B- EI 90  
Detail C- EI 90

Nullifire details will only perform to the substrates performance capabilities. This applies to fire and acoustic. It is the responsibility of the purchaser to ensure suitability. If in doubt call technical.

Drawing Title:

Banks of insulated plastic pipes in dry lined wall construction

Drawing Reference No:

PS-010

A3